

# Nature Walk 3000 feet above sea level

# A Nature Walk On Cloud

**Open Dated Theme Park Tickets**  
日期开放式主题公园门票

Business Account



**WhatsApp +65 8710 7707**

**www.707-inc.com**

**Favored ★★★★★ Sold 98 888**

所提供的行程及价格仅供参考，最终行程可能根据实际情况进行调整。受条款及细则约束。\*

The provided itinerary and price are for reference purposes only; the final itinerary may be adjusted based on the actual circumstances. Terms and conditions apply. \*



# Resorts World Awana 云顶世界阿娃娜



## Package Include 配套包括:

# **Two Way Coach : Singapore Genting Singapore**

来回车程: 新加坡 - 云顶 - 新加坡

# **Stay At Hotel x 2 (Twin)**

入住酒店 (两人一房)



# **Cable Car Return Transfer Once Only (02 Pax)**

一趟来回缆车服务 (两人)

# **Daily Buffet Breakfast at Jom Makan (02 Pax)**

每日自助早餐于 Jom Makan (两人)

**Open Dated Theme Park Tickets \$39 日期开放式主题公园门票**

所提供的行程及价格仅供参考, 最终行程可能根据实际情况进行调整。受条款及细则约束。\*

The provided itinerary and price are for reference purposes only; the final itinerary may be adjusted based on the actual circumstances. Terms and conditions apply. \*



# Simple Step To Quote 报价步骤

## Step 1 : Select Your Bus 选择您的巴士

(Child Below 2 Years Old No Seat Required 2岁以下儿童无需座位)

- One Way 单程
- Two Way Return 返回

## Step 2 : Select A Room Type 选择您的房型

- Hotel Room Type 酒店房型

## Step 3 : Select Your Check In Date 选择您的入住日期

- Base On Colour Season, Per Room Per Night.
- 以颜色区分季节, 每房每晚为准

## Step 4 : To Book Provide Detail 预订提供以下资料

Number Of Travelers 出发人数

Hotel Name 酒店名

Check In Date 入住日期

Check Out Date 退房日期

Number Of Hotel Room 酒店房间数量

Bus Date & Timing AM / PM 巴士日期发车时间上午/下午

## Remark 备注

- Dynamic Pricing Subject To Change, Limited Allotment 价格有变动的可能,售完为止
- Exclude Tourism & Sustainability Tax, Security Deposit & Travel Insurance  
不含旅游税&可持续发展税,押金和旅游保险
- Booking Is Subjected To Availability & Confirmation 一切预订以最终确认书为准
- Terms & Condition Apply 需符合条规

所提供的行程及价格仅供参考, 最终行程可能根据实际情况进行调整。受条款及细则约束。\*

The provided itinerary and price are for reference purposes only; the final itinerary may be adjusted based on the actual circumstances. Terms and conditions apply. \*

# Step 1 : Select Your Bus 选择您的巴士 (Example 例子)

(Child Below 2 Years Old No Seat Required 2岁以下儿童无需座位)

One Way Sin - Genting 单程新 - 云 (03 Mar 25 Mon) 1 Pax X \$36 = \$36

One Way Return Genting - Sin 返回云 - 新 (05 Mar 25 Wed) 1 Pax X \$27 = \$27

Two Way Return 往返新 - 云 - 新 1 Pax = ( \$36 + \$27 = \$63 )

## January / February / March 2025 一月 / 二月 / 三月

January 一月				February 二月				March 三月			
Date 日期		Sin 新加坡 - Genting 云顶	Genting 云顶 - Sin 新加坡	Date 日期		Sin 新加坡 - Genting 云顶	Genting 云顶 - Sin 新加坡	Date 日期		Sin 新加坡 - Genting 云顶	Genting 云顶 - Sin 新加坡
1	Wed			1	Sat	\$36	\$50*	1	Sat	\$36	\$27
2	Thu			2	Sun	\$36	\$55*	2	Sun	\$36	\$32
3	Fri			3	Mon	\$36	\$27	3	Mon	\$36	\$27
4	Sat			4	Tue	\$36	\$27	4	Tue	\$36	\$27
5	Sun			5	Wed	\$36	\$27	5	Wed	\$36	\$27
6	Mon			6	Thu	\$36	\$27	6	Thu	\$36	\$27
7	Tue			7	Fri	\$43	\$27	7	Fri	\$43	\$27
8	Wed			8	Sat	\$36	\$27	8	Sat	\$36	\$27
9	Thu			9	Sun	\$36	\$32	9	Sun	\$36	\$32
10	Fri			10	Mon	\$36	\$27	10	Mon	\$36	\$27
11	Sat			11	Tue	\$36	\$27	11	Tue	\$36	\$27
12	Sun			12	Wed	\$36	\$27	12	Wed	\$36	\$27
13	Mon			13	Thu	\$36	\$27	13	Thu	\$36	\$27
14	Tue			14	Fri	\$43	\$27	14	Fri	\$43	\$27
15	Wed			15	Sat	\$36	\$27	15	Sat	\$36	\$27
16	Thu			16	Sun	\$36	\$32	16	Sun	\$36	\$32
17	Fri			17	Mon	\$36	\$27	17	Mon	\$36	\$27
18	Sat			18	Tue	\$36	\$27	18	Tue	\$36	\$27
19	Sun			19	Wed	\$36	\$27	19	Wed	\$36	\$27
20	Mon			20	Thu	\$36	\$27	20	Thu	\$36	\$27
21	Tue			21	Fri	\$43	\$27	21	Fri	\$43	\$27
22	Wed			22	Sat	\$36	\$27	22	Sat	\$36	\$27
23	Thu			23	Sun	\$36	\$32	23	Sun	\$36	\$32
24	Fri			24	Mon	\$36	\$27	24	Mon	\$36	\$27
25	Sat			25	Tue	\$36	\$27	25	Tue	\$36	\$27
26	Sun			26	Wed	\$36	\$27	26	Wed	\$36	\$27
27	Mon			27	Thu	\$36	\$27	27	Thu	\$36	\$27
28	Tue			28	Fri	\$43	\$27	28	Fri	\$50*	\$27
29	Wed							29	Sat	\$36	\$27
30	Thu							30	Sun	\$36	\$32*
31	Fri							31	Mon	\$36	\$38*

\* 所提供的行程及价格仅供参考，最终行程可能根据实际情况进行调整。受条款及细则约束。

\* The provided itinerary and price are for reference purposes only; the final itinerary may be adjusted based on the actual circumstances. Terms and conditions apply.

# Step 1 : Select Your Bus 选择您的巴士 (Example 例子)

(Child Below 2 Years Old No Seat Required 2岁以下儿童无需座位)

One Way Sin - Genting 单程新 - 云 (03 Mar 25 Mon) 1 Pax X \$36 = \$36

One Way Return Genting - Sin 返回云 - 新 (05 Mar 25 Wed) 1 Pax X \$27 = \$27

Two Way Return 往返新 - 云 - 新 1 Pax = ( \$36 + \$27 = \$63 )

## April / May / June 2025 四月 / 五月 / 六月

April 四月				May 五月				June 六月			
Date 日期		Sin 新加坡 - Genting 云顶	Genting 云顶 - Sin 新加坡	Date 日期		Sin 新加坡 - Genting 云顶	Genting 云顶 - Sin 新加坡	Date 日期		Sin 新加坡 - Genting 云顶	Genting 云顶 - Sin 新加坡
1	Tue	\$36	\$27	1	Thu	\$36	\$27	1	Sun	\$36	\$32
2	Wed	\$36	\$27	2	Fri	\$43	\$27	2	Mon	\$36	\$27
3	Thu	\$36	\$27	3	Sat	\$36	\$27	3	Tue	\$36	\$27
4	Fri	\$43	\$27	4	Sun	\$36	\$32	4	Wed	\$36	\$27
5	Sat	\$36	\$27	5	Mon	\$36	\$27	5	Thu	\$36	\$27
6	Sun	\$36	\$32	6	Tue	\$36	\$27	6	Fri	\$45*	\$27
7	Mon	\$36	\$27	7	Wed	\$36	\$27	7	Sat	\$45*	\$27
8	Tue	\$36	\$27	8	Thu	\$36	\$27	8	Sun	\$36	\$32*
9	Wed	\$36	\$27	9	Fri	\$45*	\$27	9	Mon	\$36	\$27
10	Thu	\$36	\$27	10	Sat	\$45*	\$27	10	Tue	\$36	\$27
11	Fri	\$43	\$27	11	Sun	\$36	\$32*	11	Wed	\$36	\$27
12	Sat	\$36	\$27	12	Mon	\$36	\$36*	12	Thu	\$36	\$27
13	Sun	\$36	\$32	13	Tue	\$36	\$27	13	Fri	\$43	\$27
14	Mon	\$36	\$27	14	Wed	\$36	\$27	14	Sat	\$36	\$27
15	Tue	\$36	\$27	15	Thu	\$36	\$27	15	Sun	\$36	\$32
16	Wed	\$36	\$27	16	Fri	\$43	\$27	16	Mon	\$36	\$27
17	Thu	\$45*	\$27	17	Sat	\$36	\$27	17	Tue	\$36	\$27
18	Fri	\$45*	\$27	18	Sun	\$36	\$32	18	Wed	\$36	\$27
19	Sat	\$36	\$27	19	Mon	\$36	\$27	19	Thu	\$36	\$27
20	Sun	\$36	\$40*	20	Tue	\$36	\$27	20	Fri	\$43	\$27
21	Mon	\$36	\$27	21	Wed	\$36	\$27	21	Sat	\$36	\$27
22	Tue	\$36	\$27	22	Thu	\$36	\$27	22	Sun	\$36	\$32
23	Wed	\$36	\$27	23	Fri	\$43	\$27	23	Mon	\$36	\$27
24	Thu	\$36	\$27	24	Sat	\$36	\$27	24	Tue	\$36	\$27
25	Fri	\$43	\$27	25	Sun	\$36	\$32	25	Wed	\$36	\$27
26	Sat	\$36	\$27	26	Mon	\$36	\$27	26	Thu	\$36	\$27
27	Sun	\$36	\$32	27	Tue	\$36	\$27	27	Fri	\$43	\$27
28	Mon	\$36	\$27	28	Wed	\$36	\$27	28	Sat	\$36	\$27
29	Tue	\$36	\$27	29	Thu	\$36	\$27	29	Sun	\$36	\$32
30	Wed	\$36	\$27	30	Fri	\$43	\$27	30	Mon	\$36	\$27
				31	Sat	\$36	\$27				

\* 所提供的行程及价格仅供参考，最终行程可能根据实际情况进行调整。受条款及细则约束。

\* The provided itinerary and price are for reference purposes only; the final itinerary may be adjusted based on the actual circumstances. Terms and conditions apply.

# Step 1 : Select Your Bus 选择您的巴士 (Example 例子)

(Child Below 2 Years Old No Seat Required 2岁以下儿童无需座位)

One Way Sin - Genting 单程新 - 云 (03 Mar 25 Mon) 1 Pax X \$36 = \$36

One Way Return Genting - Sin 返回云 - 新 (05 Mar 25 Wed) 1 Pax X \$27 = \$27

Two Way Return 往返新 - 云 - 新 1 Pax = ( \$36 + \$27 = \$63 )

## July / August / September 2025 七月 / 八月 / 九月

July 七月				August 八月				September 九月			
Date 日期		Sin 新加坡 - Genting 云顶	Genting 云顶 - Sin 新加坡	Date 日期		Sin 新加坡 - Genting 云顶	Genting 云顶 - Sin 新加坡	Date 日期		Sin 新加坡 - Genting 云顶	Genting 云顶 - Sin 新加坡
1	Tue	\$36	\$27	1	Fri	\$43	\$27	1	Mon	\$36	\$27
2	Wed	\$36	\$27	2	Sat	\$36	\$27	2	Tue	\$36	\$27
3	Thu	\$36	\$27	3	Sun	\$36	\$32	3	Wed	\$36	\$27
4	Fri	\$43	\$27	4	Mon	\$36	\$27	4	Thu	\$36	\$27
5	Sat	\$36	\$27	5	Tue	\$36	\$27	5	Fri	\$43	\$27
6	Sun	\$36	\$32	6	Wed	\$36	\$27	6	Sat	\$36	\$27
7	Mon	\$36	\$27	7	Thu	\$36	\$27	7	Sun	\$36	\$32
8	Tue	\$36	\$27	8	Fri	\$43	\$27	8	Mon	\$36	\$27
9	Wed	\$36	\$27	9	Sat	\$36	\$27	9	Tue	\$36	\$27
10	Thu	\$36	\$27	10	Sun	\$36	\$32	10	Wed	\$36	\$27
11	Fri	\$43	\$27	11	Mon	\$36	\$27	11	Thu	\$36	\$27
12	Sat	\$36	\$27	12	Tue	\$36	\$27	12	Fri	\$43	\$27
13	Sun	\$36	\$32	13	Wed	\$36	\$27	13	Sat	\$36	\$27
14	Mon	\$36	\$27	14	Thu	\$36	\$27	14	Sun	\$36	\$32
15	Tue	\$36	\$27	15	Fri	\$43	\$27	15	Mon	\$36	\$27
16	Wed	\$36	\$27	16	Sat	\$36	\$27	16	Tue	\$36	\$27
17	Thu	\$36	\$27	17	Sun	\$36	\$32	17	Wed	\$36	\$27
18	Fri	\$43	\$27	18	Mon	\$36	\$27	18	Thu	\$36	\$27
19	Sat	\$36	\$27	19	Tue	\$36	\$27	19	Fri	\$43	\$27
20	Sun	\$36	\$32	20	Wed	\$36	\$27	20	Sat	\$36	\$27
21	Mon	\$36	\$27	21	Thu	\$36	\$27	21	Sun	\$36	\$32
22	Tue	\$36	\$27	22	Fri	\$43	\$27	22	Mon	\$36	\$27
23	Wed	\$36	\$27	23	Sat	\$36	\$27	23	Tue	\$36	\$27
24	Thu	\$36	\$27	24	Sun	\$36	\$32	24	Wed	\$36	\$27
25	Fri	\$43	\$27	25	Mon	\$36	\$27	25	Thu	\$36	\$27
26	Sat	\$36	\$27	26	Tue	\$36	\$27	26	Fri	\$43	\$27
27	Sun	\$36	\$32	27	Wed	\$36	\$27	27	Sat	\$36	\$27
28	Mon	\$36	\$27	28	Thu	\$36	\$27	28	Sun	\$36	\$32
29	Tue	\$36	\$27	29	Fri	\$43	\$27	29	Mon	\$36	\$27
30	Wed	\$36	\$27	30	Sat	\$36	\$27	30	Tue	\$36	\$27
31	Thu	\$36	\$27	31	Sun	\$36	\$32				

\* 所提供的行程及价格仅供参考，最终行程可能根据实际情况进行调整。受条款及细则约束。

\* The provided itinerary and price are for reference purposes only; the final itinerary may be adjusted based on the actual circumstances. Terms and conditions apply.



## Step 2 / 3 : Select A Room Type / Check In Date

### 选择您的房型 / 选择您的入住日期

➤ Hotel Room Type 酒店房型

➤ Base On Color Season, Per Room Per Night. 以颜色区分季节, 每房每晚为准

February (二月) 2025							March (三月) 2025							April (四月) 2025						
Sun	Mon	Tue	Wed	Thu	Fri	Sat	Sun	Mon	Tue	Wed	Thu	Fri	Sat	Sun	Mon	Tue	Wed	Thu	Fri	Sat
						1	30	31					1			1	2	3	4	5
2	3	4	5	6	7	8	2	3	4	5	6	7	8	6	7	8	9	10	11	12
9	10	11	12	13	14	15	9	10	11	12	13	14	15	13	14	15	16	17	18	19
16	17	18	19	20	21	22	16	17	18	19	20	21	22	20	21	22	23	24	25	26
23	24	25	26	27	28		23	24	25	26	27	28	29	27	28	29	30			

May (五月) 2025							June (六月) 2025							July (七月) 2025						
Sun	Mon	Tue	Wed	Thu	Fri	Sat	Sun	Mon	Tue	Wed	Thu	Fri	Sat	Sun	Mon	Tue	Wed	Thu	Fri	Sat
				1	2	3	1	2	3	4	5	6	7			1	2	3	4	5
4	5	6	7	8	9	10	8	9	10	11	12	13	14	6	7	8	9	10	11	12
11	12	13	14	15	16	17	15	16	17	18	19	20	21	13	14	15	16	17	18	19
18	19	20	21	22	23	24	22	23	24	25	26	27	28	20	21	22	23	24	25	26
25	26	27	28	29	30	31	29	30						27	28	29	30	31		

### Price Per Room Per Night + Daily Breakfast + 1 x Cable Car

每间客房每晚的价格 + 每日早餐 + 1 x 缆车服务

\* Executive Suite Afternoon Tea for 2 at Awana Garden from 3pm to 5pm

<b>Superior Deluxe</b> (2 Pax 两人一房)	<b>\$ 120</b>	<b>\$ 158</b>	<b>\$ 168</b>	<b>\$ 178</b>
<b>Superior Deluxe Sixers</b> (2 Pax 两人一房)	<b>\$ 232</b>	<b>\$ 262</b>	<b>\$ 272</b>	<b>\$ 282</b>
<b>Club Suite</b> *(NO Cable Car) (2 Pax 两人一房) *不包括缆车	<b>\$ 206</b>	<b>\$ 238</b>	<b>\$ 248</b>	<b>\$ 258</b>
<b>Executive Suite</b> * (Tea Break) (2 Pax 两人一房) * (下午茶)	<b>\$ 258</b>	<b>\$ 286</b>	<b>\$ 296</b>	<b>\$ 308</b>

Example 例子 1 : Resort World Awana – Superior (Entitlement For 2 Pax 两人一房)  
Departure 出发: [05/05/25](#)

**Coach 巴士 + Hotel 酒店: 3 Days 天 2 Nights 夜 - (2 Pax 人 + 1 Room 房)**

**Total Bus Fare 车费: 2 Pax 人 (SIN 新 – GEN 云) \$72 + (GEN 云- SIN 新) \$54 = \$126 \***

**Total Room Fare 总房费: 1 Room 房 \$120 + \$120 = \$240 \***

**Grand Total 总数: \$126 \* + \$240 \* = \$366 or Average 平均 \$183 \* Per Pax 每人**

所提供的行程及价格仅供参考, 最终行程可能根据实际情况进行调整。受条款及细则约束。\*

The provided itinerary and price are for reference purposes only; the final itinerary may be adjusted based on the actual circumstances. Terms and conditions apply. \*



# Resorts World Awana How To Get There By Van & Cable Car Transfer



**By Shuttle Bus Operating Hours Daily 7am – 11pm (Hourly)**  
Shuttle Bus Services Are Complimentary For Our In-house Guests And Run Hourly From Resorts World Awana To Awana Skycentral / Genting Highlands Premium Outlets And Vice Versa.



**By Awana Skyway Operating Hours Daily 7am – 11pm**  
Fly Up Within 10 Minutes On The Awana Skyway To Resorts World Genting. Hop Off The Shuttle Bus At Awana Skycentral And Purchase Your Tickets At The Ticketing Counters, Or Better – Save Some Time By Getting Your Awana Skyway Tickets Online!

所提供的行程及价格仅供参考，最终行程可能根据实际情况进行调整。受条款及细则约束。\*

The provided itinerary and price are for reference purposes only; the final itinerary may be adjusted based on the actual circumstances. Terms and conditions apply. \*



# Resorts World Awana Van Transfer Service

Travel with ease to enjoy our world-class attractions and excitements at Resorts World Genting from Resorts World Awana with our new van transfer service! The van transfer service is available to and from Resorts World Awana to any hotel within Resorts World Genting.

Pick Up & Drop-off Points Lobby ,  
Resorts World Awana



First World Hotel  
Genting SkyWorlds Hotel  
Resort Hotel  
Genting Grand Hotel  
Highlands Hotel  
Crockfords

## 24 Hour Van Transfer To Hotel Direct



### Terms & Conditions

- 1.To reserve, please call +6012 332 6386.
- 2.This service operates on a 24 hours basis.
- 3.Each ride is approximately 15 minutes.
- 4.A one-way trip per passenger is chargeable at RM15.
- 5.A minimum of one (01) hour is required to reserve this service before your desired departure time.
- 6.Each trip allows for a maximum of 10 passengers only.
- 7.Payment for this service may be made at the Reception via credit card or billing to your room.



所提供的行程及价格仅供参考，最终行程可能根据实际情况进行调整。受条款及细则约束。\*

The provided itinerary and price are for reference purposes only; the final itinerary may be adjusted based on the actual circumstances. Terms and conditions apply. \*





# Free Shuttle Service

Perkhidmatan ulang-alik percuma

免费接驳车服务

From / Dari / 出发 AWANA HOTEL 云顶世界阿娃娜	From / Dari / 出发 SWISS GARDEN HOTEL 云顶高原瑞园酒店	From / Dari / 出发 SCAPES HOTEL 云顶高原司格酒店	From / Dari / 出发 GENTING HIGHLANDS PREMIUM OUTLETS 云顶高原名牌折扣购物中心
7am	-	-	7:30am
8am	-	-	8:30am
9am	9:15am	9:30am	9:45am
10am	-	-	10:30am
11am	-	-	11:30am
12nn	-	-	12:30nn
1pm	-	-	1:30pm
3pm	3:15pm	3:30pm	3:45pm
4pm	-	-	4:30pm
5pm	-	-	5:30pm
6pm	-	-	6:30pm
8pm	8:15pm	8:30pm	8:45pm
9pm	-	-	9:30pm
10pm	-	-	10:30pm
11pm	-	-	11:15pm

\*The shuttle service is reserved for Resorts World Awana guests only.  
Perkhidmatan bas shuttle dikhaskan untuk tetamu Resorts World Awana sahaja. 巴士载送服务只限於云顶世界阿娃娜住客。

\*The Management reserves the rights to alter or withdraw any of the above schedules at any time without prior notice.  
Pihak Pengurusan berhak untuk mengubah atau menarik balik mana-mana jadual di atas pada bila-bila masa tanpa notis terlebih dahulu. 管理层保留在无需预先知会的情况下更改或取消以上任何时间表的权利。







## Welcome to Awana SkyWay!

Fly up in just 10 minutes from the Awana Station at mid-hill to the SkyAvenue Station at the peak. With the same ticket, you get a free stop at the Chin Swee Station, where you can explore the beautiful Chin Swee Caves Temple and its magnificent surroundings at no extra cost

### Park and ride

Leave your car at the Awana SkyCentral car park (adjoining Genting Highlands Premium Outlets) so you can board the cable car from the Awana Station.

### 云天缆车

轻便舒适上顶峰只需十分钟，您能从半山的阿娃娜站抵达山顶的终点云天大道站。此外，您可在清水缆车站免费下车，探索清水岩庙及其优美的风景，再使用同一张车票继续您的旅程到达峰顶，或前往阿娃娜站。

### 停车半山，改乘缆车轻松攻顶

您可将您的爱车停泊在与云顶高原名牌折扣购物中心毗邻的Awana SkyCentral停车场，然后在阿娃娜站搭乘缆车轻松上山。

#### AWANA SKYWAY TICKET PRICING

##### One-way RM10 | Return RM18

- Ride on Standard gondola
- Shared ride (8 – 10 passengers per gondola)
- Normal boarding at Lane C
- Complimentary stopover at Chin Swee Caves Temple

##### One-way RM16 | Return RM30

- Ride on Standard gondola
- Shared ride (8 – 10 passengers per gondola)
- Express boarding at Lane D
- Complimentary stopover at Chin Swee Caves Temple

#### 云天缆车票价

##### 标准车厢单程 RM10 | 来回 RM18

- 乘坐标准缆车
- 须与其他乘客共乘(每座缆车可容纳8至10名乘客)
- 使用通道 C 登上缆车
- 途中免费停留探索清水岩庙

##### 标准缆车(快速通道登机)单程 RM16 | 来回 RM30

- 乘坐标准缆车
- 须与其他乘客共乘(每座缆车可容纳8至10名乘客)
- 使用快速通道 D 搭乘缆车
- 途中免费停留探索清水岩庙



#### Awana SkyWay Operating Hours:

Sunday - Wednesday: 7am - 11pm

Thursday - Saturday & Eve of Public Holidays: 7am - 1am

#### Chin Swee Station Operating Hours:

Daily 8am – 7pm

#### 云天缆车运作时间:

星期一至三及星期日: 上午7时至晚上11时

星期四至六、公假及假前夕: 上午7时至午夜1时

#### 清水岩站运作时间:

每日上午8时至下午7时 **One-way RM10 | Return RM18**



Business Account

**WhatsApp +65 8710 7707**

**www.707-inc.com**

所提供的行程及价格仅供参考，最终行程可能根据实际情况进行调整。受条款及细则约束。\*

The provided itinerary and price are for reference purposes only; the final itinerary may be adjusted based on the actual circumstances. Terms and conditions apply. \*



# Genting Coach Schedule - Daily Departure

## 云顶 - 时间表每日出发

Singapore To Genting 新加坡去云顶	Singapore SG 新加坡 ↔ Genting MY 云顶	Genting Singapore 云顶去新加坡
	Alight 下车: Genting Main Terminal (Hilltop)	
	*Alight 下车: Resort World Awana Lobby - Fr Harbourfront	
6.40 AM	People's Park Centre (168 Coffee Shop) 牛车水珍珠大厦 (168 咖啡店)	12.00 PM 3.15 PM
7.00 AM 9.10 PM	Kovan (Interchange Bus Terminal) 高文 (巴士转换站)	10.45 AM 12.05 PM
7.20 AM 9:00 PM	Ban San Street / Queen Street (170 Bus Terminal) 万山街 / 奎因街 (170 巴士总站)	10.00 AM 12.20 PM
7.05 AM 10.25 AM 9.15 PM	Boon Lay Shopping Centre (Savoy Theatre) 文礼购物中心 (Savoy Theatre)	10.05 AM 12.15 PM
7.35 AM	Jurong East Genting Hotel (Side Road) 裕廊东云顶酒店 (路旁)	10.45 AM 12.10 PM
8.00 AM 10.10 AM 9.40 PM	Harbourfront Centre (Coach Bay 1 2 3) 港湾中心 (巴士停车场 1 2 3)	10.15 AM 12.10 PM
6.10 AM	Choa Chu Kang MRT Exit C (Pick Up Bay No.5) *(RW)* 蔡厝港地铁站出口 C (巴士车站 5 号)	1.30 PM
6.30 AM 9.45 PM	Jurong East MRT Exit B (Venture Ave Bus Bay No.5) *(RW)* 裕廊东地铁站出口 B (巴士车站 5 号)	1.30 PM
5.30 AM 9.00 PM	Tampines MRT Exit B (Bicycle Park) *(RW)* 淡滨尼地铁站出口 B (脚踏车站)	11.30 AM 1.00 PM
6.00 AM 10.00 AM 9.30 PM	Yishun MRT Exit B (Bicycle Park - Pick Up Point) *(RW)* 义顺地铁站出口 B (脚踏车站 - 接送点)	11.30 AM 1.00 PM
5.45 AM 9.40 AM 9.15 PM	Sengkang - Compass One (G16 Taxi Stand) *(RW)* 盛港 - 勘宝坊 - 1号 (G16 德士站)	11.30 AM 1.00 PM
5.50 AM	Ang Mo Kio (Bus Stop Infront Of Block 710) *(RW)* 宏茂桥第 710 座前面的巴士站	1.00 PM
Malacca To Genting 马六甲去云顶	Malacca MY 马六甲 ↔ Genting MY 云顶	Genting To Malacca 云顶去马六甲
	Alight 下车: Genting Main Terminal (Hilltop)	
10.05 AM	707 Hub / Estadia / Hatten Hotel Coach Bay 马六甲 707 中心 / 雅胜 / 惠胜酒店巴士总站	11.00 AM 3.30 PM

所提供的行程及价格仅供参考，最终行程可能根据实际情况进行调整。受条款及细则约束。\*

The provided itinerary and price are for reference purposes only; the final itinerary may be adjusted based on the actual circumstances. Terms and conditions apply. \*



# Interior 内部 (2 + 1) 27 - 30 Seater 座位



## Coach Fleets 车队



**Gold Class**



**Recline Seat**



**USB**



**Wifi**



**Air Suspensions**

**\*\*\*Free WIFI And USB Ports Are Available On Select Coaches Only.\*\*\***

**We Are On The Verge Of Upgrading Our Coach Fleet. \*Terms Applies Please Take Note : Product Images Are For Illustrative Purposes Only.**

**\*\*\*仅部分车厢提供免费 WIFI 和 USB 端口。\*\*\***

**我们即将升级我们的客车车队。\*适用条款请注意：产品图片仅供说明之用。**

行程仅供参考, 最终行程可能会根据实际情况进行微调。须符合条规

The itinerary is for reference only, the final itinerary may be fine-tuned according to the actual situation. Terms Apply\*





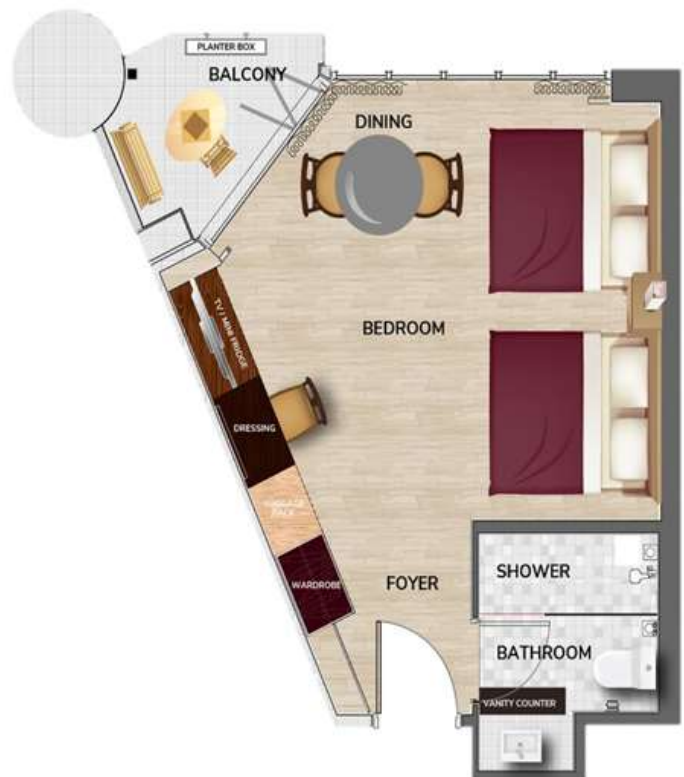
# Resort World Awana Superior Deluxe Room

With Dining Table Ideal For Two Adults Only



## Facilities & Amenities

- **Tv With Satellite Tv Programmes (Astro)**
- **In-house Movies Channel**
- **Complimentary High Speed WIFI Access**
- **In-house Telephone**
- **Hair Dryer**
- **Tea & Coffee Making Facilities**
- **Electric Water Kettle**
- **Safe Box**
- **Standing Shower**
- **Dining Table**
- **Mini Fridge**
- **Air-conditioned**



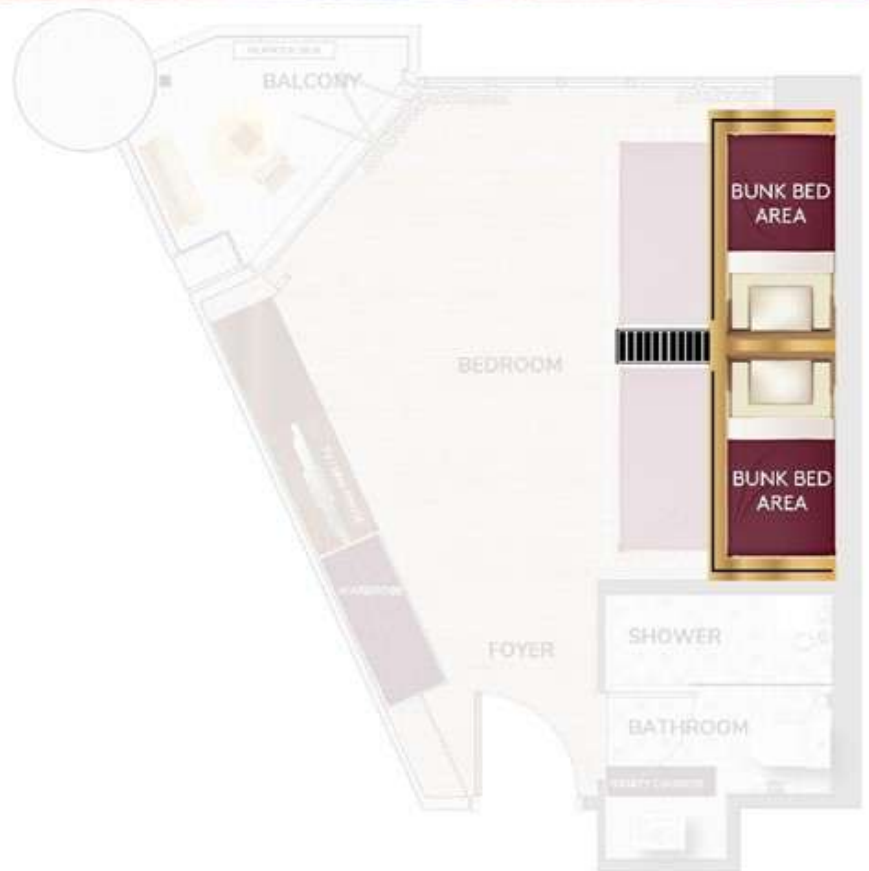
所提供的行程及价格仅供参考，最终行程可能根据实际情况进行调整。受条款及细则约束。\*

The provided itinerary and price are for reference purposes only; the final itinerary may be adjusted based on the actual circumstances. Terms and conditions apply. \*





**Resort World Awana Superior Deluxe Sixer Room**  
**With 02 Queen Beds And 02 Super Single Bunk Beds,**  
**Ideal Up To Six Pax.**



**Facilities & Amenities**

- **Tv With Satellite Tv Programmes (Astro)**
- **In-house Movies Channel**
- **Complimentary High Speed WIFI access**
- **In-house Telephone**
- **Safe Box**
- **Mini Fridge**
- **Tea & Coffee Making Facilities**
- **Electric Water Kettle**
- **Air-Conditioned**
- **Standing Shower**
- **Hair Dryer**
- **Slippers**
- **Bath Amenities**

Picture For Illustration Only 图片仅供参考 RWG Website

所提供的行程及价格仅供参考，最终行程可能根据实际情况进行调整。受条款及细则约束。\*

The provided itinerary and price are for reference purposes only; the final itinerary may be adjusted based on the actual circumstances. Terms and conditions apply. \*





# Resort World Awana Club Suite Room

With Sofa Bed And Dining Table Ideal For Two Adults Only



## Facilities & Amenities

- **Tv With Satellite Tv Programmes (Astro)**
- **In House Movies Channels**
- **Complimentary High Speed WIFI Access**
- **In House Telephone**
- **Safe Box**
- **Coffee Machine**
- **Electric Water Kettle**
- **Complimentary Mineral Water**
- **Iron & Ironing Board**
- **Dining Table**
- **Mini Fridge**
- **Living Hall With Sofa Bed**
- **Air Conditioned**
- **Standing Shower**
- **Hair Dryer**
- **Bathrobe & Slippers**
- **Bath Amenities**



Picture For Illustration Only 图片仅供参考 RWG Website

所提供的行程及价格仅供参考，最终行程可能根据实际情况进行调整。受条款及细则约束。\*

The provided itinerary and price are for reference purposes only; the final itinerary may be adjusted based on the actual circumstances. Terms and conditions apply. \*





# Resort World Awana Executive Suite Room

With Sofa Bed And Dining Table Ideal For Two Adults Only



## Facilities & Amenities

- **Tv With Satellite Tv Programmes (Astro)**
- **In House Movies Channels**
- **Complimentary High Speed WIFI Access**
- **In House Telephone**
- **Safe Box**
- **Coffee Machine**
- **Electric Water Kettle**
- **Complimentary Mineral Water**
- **Iron & Ironing Board**
- **Dining Table**
- **Mini Fridge**
- **Living Hall With Sofa Bed**
- **Air Conditioned**
- **Standing Shower**
- **Hair Dryer**
- **Bathrobe & Slippers**
- **Bath Amenities**



Picture For Illustration Only 图片仅供参考 RWG Website

所提供的行程及价格仅供参考，最终行程可能根据实际情况进行调整。受条款及细则约束。\*

The provided itinerary and price are for reference purposes only; the final itinerary may be adjusted based on the actual circumstances. Terms and conditions apply. \*



# Awana Trail Nature Escapade

Take the path less travelled and be rejuvenated by the beauty of Mother Nature at our nature-inspired resort with the Awana Trail Nature Escapade at Resorts World Awana. Inclusive of a guided nature tour on the Awana Trail with Genting Nature Adventures, marvel at the splendour of the 130-million-year-old rainforest enveloping the resort. This eco-retreat package is perfect for weekend warriors, hiking enthusiasts or those looking for a back-to-nature getaway!

## Blazes a Trail

Nestled in between 3,000 to 6,000 ft above sea level, Genting Nature Adventures is one of the planet's oldest and uniquely diverse tropical rainforest experiences, offering an immerse and rich insight in to the biodiversity of Genting Highlands. Discover the never-before-seen natural wonders consisting of both plant life and animal inhabitants that made the highlands their home for millions of years.

Get up close and personal with various fauna and flora - encounter wild Siamangs, beautiful tropical birds and endangered highland pitcher plants. Learn more about them through narrated guided tours and interactive wayfinding as you hike through their majestic natural habitat and incredible landscape.



# Resorts World Awana

## 云顶世界阿娃娜



Discover the embrace of pristine nature

Located just 35 minutes from the Kuala Lumpur city centre, the resort is an ideal destination for a refreshing break from the bustling lowlands. Popular activities include golf at our iconic 18-hole mountainous course, multi-level trekking through our 130-million-year-old rainforest and exotic bird watching.

Resorts World Awana is also home to AYU Awana, Malaysia's first tropical lifestyle restaurant and poolside lounge located in the highlands.

The resort is only a two-minute drive from the Genting Highlands Premium Outlets. Free shuttle service to the premium outlets is provided at regular intervals from the hotel lobby.

所提供的行程及价格仅供参考，最终行程可能根据实际情况进行调整。受条款及细则约束。\*

The provided itinerary and price are for reference purposes only; the final itinerary may be adjusted based on the actual circumstances. Terms and conditions apply. \*





# 707-Inc Xpress



✓ Included

✓ **Coach Insurance**

✓ **Coach Transfer**

✓ **Hotel**

✗ Excluded

✗ **Travel Insurance**

✗ **Hotel Tax**

## Coach Insurance 巴士上保險 Policy Schedule

For The Benefit Of: Coach Passengers Of The Policyholder Departure <u>Singapore</u> / Return <u>Singapore</u> ONLY 有效:新加坡出发 / 返回新加坡	Maximum Benefit Limit Payable Per Insured Person \$ SGD Singapore Dollars
1. <b>Accidental Death &amp; Permanent Disablement</b> * 80 Years Old Above Coverage \$12,500	<b>\$ 25,000</b>
2. <b>Accidental Medical Expenses</b>	<b>\$ 2,000</b>
3. <b>Emergency Medical Evacuation</b>	<b>\$ 1,000</b>
4. <b>Loss Of Baggage Due To Thief, Burglary Or Robbery</b> (Police Report Required) 需要警方报告	<b>\$ 200</b>

Coverage: Underwritten By Chubb Insurance.

NOT Valid For Malaysia Interstate Travelers

**One Way \$5.00**

**Two Way \$10.00**

所提供的行程及价格仅供参考，最终行程可能根据实际情况进行调整。受条款及细则约束。\*

The provided itinerary and price are for reference purposes only; the final itinerary may be adjusted based on the actual circumstances. Terms and conditions apply. \*



# Genting 云顶 707-Inc

Board And Alight Same Location.

Check In At Genting Main Terminal (Hilltop) 707-Inc Counter No. 1 (One) For Bus Number.  
Present Your Voucher With Name, Date, Time, and Seat Number To Ground Crew Before Boarding.

在同一地点上车和下车。

请在云顶山顶巴士总站 707-Inc柜台一号报到及询问巴士号码。

在报到时, 请向707-Inc的工作人员出示您包含姓名、日期、时间和座位号的订单



www.707-inc.com

Check In

提早前往办理报到手续

30 Min



Genting Main Terminal (Hilltop)  
Board and Alight Point  
云顶山顶巴士总站BT3  
上下车地点

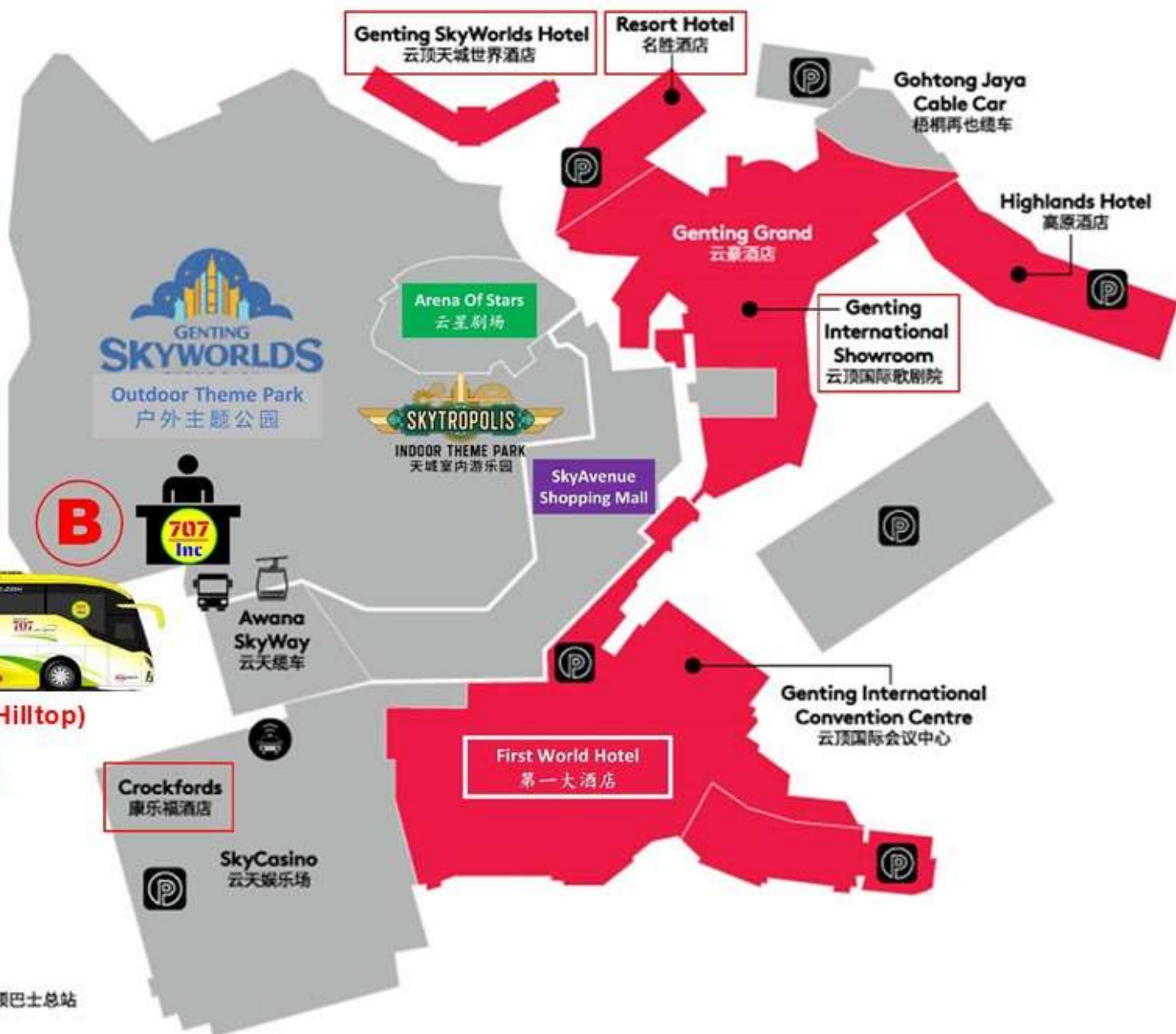
LEGEND 图例



Parking 停车场



Hilltop Bus Terminal 山顶巴士总站



Genting Main Terminal (Hilltop) BT3 / Sky Avenue / Crockfords / First World  
Are The Same Location 都在同一位置

Whatsapp Messages Only SG +65 8737 7707. Travel Info: www.707-inc.com/info

Daily 10:00 AM – 4:00 PM



Genting Main Terminal (Hilltop)  
Bus Check In / Concert & Events  
Redemption Counter

**707-Inc No. 1 (One)**

**云顶山顶巴士总站**  
巴士车票 / 演唱会和特别活动  
门票报到与兑换柜台  
**707-Inc 柜台一号**



所提供的行程及价格仅供参考, 最终行程可能根据实际情况进行调整。受条款及细则约束。\*

The provided itinerary and price are for reference purposes only; the final itinerary may be adjusted based on the actual circumstances. Terms and conditions apply. \*





# Genting 云顶

## Place Of Interests

**Skytropolis Indoor Theme Park**  
**SkyWorlds outdoor Theme Park**  
**Awana SkyWay**  
**Genting Entertainment Facility**  
**BigTop Video Games Park**  
**Vision City Video Games Park**  
**Sky VR**  
**Genting Snow World**  
**Ripley's Believe It Or Not**  
**Genting Bowl**

## 好玩景点

天城室内主题乐园  
 天城世界主题乐园  
 云天缆车  
 云顶娱乐设施  
 大本营电玩城  
 梦幻电玩城  
**Sky VR**  
 云顶雪世界  
 云顶信不信由你  
 云顶保龄球场

## Surrounding Explore

**Chin Swee Caves Temple**  
**Lim Goh Tong Memorial Hall**  
**Genting Strawberry Leisure Farm**  
**Gohtong Jaya**  
**World of Phalaenopsis**  
**Happy Bee Farm**  
**Awana Horse Ranch**

## 外围探索

清水岩庙  
 林梧桐纪念馆  
 云顶草莓园  
 梧桐再也  
 蝴蝶兰世界  
 蜜蜂园  
 牧马场

## Food & Night Life Explore

**Malaysian Food Street**  
**Jom Makan Street Food**  
**Genting Garden Hotpot**  
**Starbucks Coffee**  
**Han's Cha Chaan Teng**  
**Burger & Lobster**  
**Five Guys**  
**Motorino Pizzeria**  
**The Laughing Fish by Harry Ramsden**  
**High Line**  
**FUHU Restaurant**  
**Zouk Genting**  
**Cloud 9 Casual bar**  
**Redtail Karaoke**

## 美食与夜生活探索

马来西亚美食街  
**Jom Makan**美食街  
 云顶花园火锅  
 星巴克咖啡  
 汉记茶餐厅  
 天台休闲美食街  
 福虎餐厅  
**Zouk** 夜店  
**Cloud 9** 休闲酒吧  
 卡拉ok

## Shopping & Relax

**SkyAvenue Complex**  
**First World Complex**  
**Genting Grand Complex**  
**Genting Premium Outlets**  
**Awana SkyCentral**

## 购物与放松

云天综合大楼  
 第一综合大楼  
 云豪综合大楼  
 云顶名牌折扣购物中心

所提供的行程及价格仅供参考，最终行程可能根据实际情况进行调整。受条款及细则约束。\*

The provided itinerary and price are for reference purposes only; the final itinerary may be adjusted based on the actual circumstances. Terms and conditions apply. \*





**FLASH**

**SALE**

# Open Dated Theme Park Tickets

# 日期开放式 主题公园门票 \$39

SkyWorlds Theme Park: Theme Park Ride

[www.gentingskyworlds.com/](http://www.gentingskyworlds.com/)

- \* SkyWorlds Outdoor Theme Park.
- \* Redemption At 707- Inc Counter.
- \* Closed Every Tuesday.
- \* Except Malaysia Public Holidays.
- \* No Amendment, Cancellation or Revalidate.
- \* Ticket Sold NO REFUND. (Rain or Shine)



# Auspicious Package

Dynamic Pricing Subject To Change, Limited Allotment

价格有变动的可能, 售完为止



Business Account

**WhatsApp +65 8710 7707**



**www.707-inc.com**

**Favored ★★★★★ Sold 101 888**

所提供的行程及价格仅供参考, 最终行程可能根据实际情况进行调整。受条款及细则约束。\*

The provided itinerary and price are for reference purposes only; the final itinerary may be adjusted based on the actual circumstances. Terms and conditions apply. \*