

# Genting I Tour Package

# 云顶 I 旅游 配套

# Resorts

# World

# Awana

**Business Account**

**WhatsApp +65 8710 7707**

**[www.707-inc.com](http://www.707-inc.com)**

**Favored ★★★★★ Sold 16998**



行程仅供参考, 最终行程可能会根据实际情况进行微调。须符合条规

The itinerary is for reference only, the final itinerary may be fine-tuned according to the actual situation. Terms Apply\*





Resorts World  
GENTING

**FLASH**

**SALE**



## Optional Theme Park Tickets Available

附加主题公园门票  
**\$39 PWP \$45 Ticket Only**

**SkyWorlds Theme Park: Theme Park Ride**

<https://www.gentingskyworlds.com/>

- \* SkyWorlds Outdoor Theme Park.
- \* Redemption At 707- Inc Counter.
- \* Closed Every Tuesday.
- \* Except Malaysia Public Holidays.
- \* No Amendment, Cancellation or Revalidate.
- \* Ticket Sold NO REFUND.

# Auspicious Package

Dynamic Pricing Subject To Change, Limited Allotment

价格有变动的可能, 售完为止

Business Account

**WhatsApp +65 8710 7707**

**www.707-inc.com**

**Favored ★★★★★ Sold 16998**



行程仅供参考, 最终行程可能会根据实际情况进行微调。须符合条规

The itinerary is for reference only, the final itinerary may be fine-tuned according to the actual situation. Terms Apply\*



# Simple Step To Quote 报价步骤

## Step 1 : Select A Hotels 选择您的酒店

- # **Resorts World Awana** 阿娃娜酒店
- # **First World Hotel** 云顶第一大酒店
- # **Genting SkyWorlds Hotel** 云顶天城世界
- # **Crockfords Hotel** 康乐福酒店
- # **Genting Grand** 云顶大酒店
- # **Resort Hotel** 名胜酒店

## Step 2 : Select Your Check In Date 选择您的入住日期

### # **Base On Colour Season, Per Room Per Night.**

以颜色区分季节，每房每晚为准。

## Step 3 : Select Number Of Traveler 选择旅客人数

**(Child Below 2 Years Old No Seat Required 2岁以下儿童无需座位)**

### # **Base On Colour Season, Per Pax.**

以颜色区分季节，每人为准。

## Step 4 : To Book Provide Detail 预订提供以下资料

<b>Number Of Travellers</b>	出发人数
<b>Hotel Name</b>	酒店名
<b>Check In Date</b>	入住日期
<b>Check Out Date</b>	退房日期
<b>Number Of Hotel Room</b>	酒店房间数量
<b>Bus Timing AM / PM</b>	巴士发车时间 上午 / 下午

Optional Theme Park Tickets Available 附加主题公园门票 \$39 PWP \$45 Ticket Only

### Remark 备注

- # **Dynamic Pricing Subject To Change, Limited Allotment** 价格有变动的可能，售完为止
- # **Exclude Tourism & Sustainability Tax, Security Deposit & Travel Insurance**  
不含旅游税&可持续发展税，押金和旅游保险
- # **Booking Is Subjected To Availability & Confirmation** 一切预订以最终确认书为准
- # **Terms & Condition Apply** 需符合条规

# Example: Quote:

## Additional Theme Park Ticket \$39 PWP / \$45 Per Pax

### Example 1 : Genting Package: First World Y5 Deluxe

Coach A: + Hotel B: 3 Days 2 Nights - (4 Pax + 3 Room) - Departure: 11 To 13/01/24

70

A Coach Transfer: 4 Pax X \$70 = \$280 (Base On Highest At Season)

112 + 152 B Hotel: First World Hotel - Type: Y5 Deluxe x 02 Room X \$264 = \$528

Coach A: + Hotel B: Grand Total: \$280 + \$528 = \$808 /4 Average \$202 Per Pax

### # Example 2 : Genting Package: First World Y5 Triple

Coach A: + Hotel B: 2 Days 1 Nights - (3 Pax + 1 Room) - Departure: 13 To 14/01/24

70 A Coach Transfer: 3 Pax X \$70 = \$210 (Base On Highest At Season)

162 B Hotel: First World Hotel - Type: Y5 Triple x 01 Room X \$162 = \$162

Coach A: + Hotel B: Grand Total: \$210 + \$162 = \$372 /3 Average \$124 Per Pax

### # Example 3 : Genting Package: SkyWorld Quad

Coach A: + Hotel B: 4 Days 3 Nights - (5 Pax + 1 Room) - Departure: 13 To 16/06/24

120

A Coach Transfer: 5 Pax X \$120 = \$600 (Base On Highest At Season)

210 + 250 + 260 B Hotel: SkyWorld Hotel - Type: Quad x 01 Room X \$720 = \$720

Coach A: + Hotel B: Grand Total: \$600 + \$720 = \$1320 /5 Average \$264 Per Pax

### # Example 4 : Genting Package: SkyWorld Sixers

Coach A: + Hotel B: 3 Days 2 Nights - (15 Pax + 2 Room) - Departure: 07 To 09/01/24

63

A Coach Transfer: 15 Pax X \$63 = \$945 (Base On Highest At Season)

222 + 222 B Hotel: SkyWorld Hotel - Type: Sixers x 02 Room X \$444 = \$888

Coach A: + Hotel B: Grand Total: \$945 + \$888 = \$1833 /15 Average \$122 Per Pax

Optional Theme Park Tickets Available 附加主题公园门票 \$39 PWP \$45 Ticket Only

行程仅供参考, 最终行程可能会根据实际情况进行微调。须符合条规

The itinerary is for reference only, the final itinerary may be fine-tuned according to the actual situation. Terms Apply\*



# Resorts World Awana

## 云顶世界阿娃娜



### I Tour Package Include 配套包括:

**Optional Theme Park Tickets Available 附加主题公园门票 \$39 PWP \$45 Ticket Only**

### # Two Way Coach : Singapore Genting Singapore

来回车程: 新加坡 - 云顶 - 新加坡

### # Stay At Hotel x 2 (Twin)

入住酒店 (两人一房)



### # SkyWay Return Transfer Once Only (02 Pax)

一趟来回缆车服务 (两人)

### # Daily Buffet Breakfast at Jom Makan (02 Pax)

每日自助早餐于 Jom Makan (两人)



### Optional Theme Park Tickets

行程仅供参考, 最终行程可能会根据实际情况进行微调。须符合条规

The itinerary is for reference only, the final itinerary may be fine-tuned according to the actual situation. Terms Apply\*



# Resorts World Awana

## 云顶世界阿娃娜

January (一月) 25							February (二月) 25							March (三月) 24							April (四月) 24						
Sun	Mon	Tue	Wed	Thu	Fri	Sat	Sun	Mon	Tue	Wed	Thu	Fri	Sat	Sun	Mon	Tue	Wed	Thu	Fri	Sat	Sun	Mon	Tue	Wed	Thu	Fri	Sat
			1	2	3	4							1	31					1	2		1	2	3	4	5	6
5	6	7	8	9	10	11	2	3	4	5	6	7	8	3	4	5	6	7	8	9	7	8	9	10	11	12	13
12	13	14	15	16	17	18	9	10	11	12	13	14	15	10	11	12	13	14	15	16	14	15	16	17	18	19	20
19	20	21	22	23	24	25	16	17	18	19	20	21	22	17	18	19	20	21	22	23	21	22	23	24	25	26	27
26	27	28	29	30	31		23	24	25	26	27	28		24	25	26	27	28	29	30	28	29	30				
May (五月) 24							June (六月) 24							July (七月) 24							August (八月) 24						
Sun	Mon	Tue	Wed	Thu	Fri	Sat	Sun	Mon	Tue	Wed	Thu	Fri	Sat	Sun	Mon	Tue	Wed	Thu	Fri	Sat	Sun	Mon	Tue	Wed	Thu	Fri	Sat
			1	2	3	4	30						1		1	2	3	4	5	6					1	2	3
5	6	7	8	9	10	11	2	3	4	5	6	7	8	7	8	9	10	11	12	13	4	5	6	7	8	9	10
12	13	14	15	16	17	18	9	10	11	12	13	14	15	14	15	16	17	18	19	20	11	12	13	14	15	16	17
19	20	21	22	23	24	25	16	17	18	19	20	21	22	21	22	23	24	25	26	27	18	19	20	21	22	23	24
26	27	28	29	30	31		23	24	25	26	27	28	29	28	29	30	31				25	26	27	28	29	30	31
September (九月) 24							October (十月) 24							November (十一月) 24							December (十二月) 24						
Sun	Mon	Tue	Wed	Thu	Fri	Sat	Sun	Mon	Tue	Wed	Thu	Fri	Sat	Sun	Mon	Tue	Wed	Thu	Fri	Sat	Sun	Mon	Tue	Wed	Thu	Fri	Sat
1	2	3	4	5	6	7			1	2	3	4	5				1	2	3	4	31					1	2
8	9	10	11	12	13	14	6	7	8	9	10	11	12	5	6	7	8	9	10	11	3	4	5	6	7	8	9
15	16	17	18	19	20	21	13	14	15	16	17	18	19	12	13	14	15	16	17	18	10	11	12	13	14	15	16
22	23	24	25	26	27	28	20	21	22	23	24	25	26	19	20	21	22	23	24	25	17	18	19	20	21	22	23
29	30						27	28	29	30	31			26	27	28	29	30			24	25	26	27	28	29	30

**Dynamic Pricing Subject To Change - Limited Allotment / 价格有变动的可能 - 售完为止**

<b>A: Season Two Way Coach 来回车程</b>	<b>Low 淡季</b>	<b>Peak 旺季</b>	<b>Super 超旺</b>	<b>High 巅峰</b>
<b>Coach Price Per Pax 车票价每人</b>	<b>\$ 63</b>	<b>\$ 70</b>	<b>\$ 110</b>	<b>\$ 120</b>
<b>B: Season Room Package 客房配套</b>				
<b>Price Per Room Per Night + Daily Breakfast + 1 x SkyWay</b> 每间客房每晚的价格 + 每日早餐 + 1 x 缆车服务				
<b>Superior Deluxe (2 Pax 两人一房)</b>	<b>\$ 126</b>	<b>\$ 166</b>	<b>\$ 176</b>	<b>\$ 196</b>

行程仅供参考,最终行程可能会根据实际情况进行微调。须符合条规

**The itinerary is for reference only, the final itinerary may be fine-tuned according to the actual situation. Terms Apply\***

# Genting Coach Schedule 云顶时间表

Departure 出发	Singapore 新加坡	Genting 云顶	Return 回程
<b>6:40 AM</b>	<b>People's Park Centre 168 Coffee Shop</b> 牛车水珍珠大厦 168咖啡店		<b>12:00 PM</b> <b>1:30 PM</b>
<b>9:45 AM</b> <b>9:20 PM</b>	<b>Harbourfront Centre Coach Bay</b> 港湾中心巴士巴士停车场		<b>10:30 AM</b>
<b>7:20 AM</b> <b>9:00 PM</b>	<b>Ban San Street / Queen Street 170 Bus Terminal</b> 万山街 / 奎因街 170巴士总站		<b>10:00 AM</b> <b>12:20 PM</b>
<b>7:05 AM</b> <b>9:15 PM</b>	<b>Boon Lay Shopping Centre</b> 文礼购物中心		<b>10:05 AM</b> <b>12:15 PM</b>
<b>7:35 AM</b>	<b>Jurong East Genting Hotel Side Road</b> 裕廊东 云顶酒店路旁		<b>12:10 PM</b> <b>1:30 PM</b>
<b>7:00 AM</b> <b>9:15 AM</b> <b>8:50 PM</b>	<b>Kovan Interchange Bus Stop</b> 高文巴士转换站		<b>10:30 AM</b> <b>12:05 PM</b>
Departure 出发	Johor Bharu 新山	Genting 云顶	Return 回程
<b>7:30 AM</b> <b>9:00 PM</b>	<b>Merlin / Tun Aminah/ Senai/ Sri Putri / Kulai / Johor Jaya</b> 美伦大厦 / 皇后 / 公主 / 士乃 / 古来 / 柔佛再也		<b>12:00 PM</b> <b>3:30 PM</b>
Departure 出发	Malacca 马六甲	Genting 云顶	Return 回程
<b>10:05 AM</b>	<b>707 Hub / Estadia / Hatten Hotel Coach Bay / 马六甲雅胜/惠胜酒店巴士总站/707中心</b>		<b>12:00 PM</b> <b>3:30 PM</b>
<b>Alight 抵达</b>	<b>Genting Hilltop Bus Terminal BT3</b> 云顶山顶巴士总站 BT3		<b>Return 回程</b>

行程仅供参考, 最终行程可能会根据实际情况进行微调。须符合条规

The itinerary is for reference only, the final itinerary may be fine-tuned according to the actual situation. Terms Apply\*



# Resorts World Awana How To Get There By Van & Skyway Transfer



**By Shuttle Bus Operating Hours Daily 7am – 11pm (Hourly)**  
Shuttle Bus Services Are Complimentary For Our In-house Guests And Run Hourly From Resorts World Awana To Awana Skycentral / Genting Highlands Premium Outlets And Vice Versa.



**By Awana Skyway Operating Hours Daily 7am – 11pm**  
Fly Up Within 10 Minutes On The Awana Skyway To Resorts World Genting. Hop Off The Shuttle Bus At Awana Skycentral And Purchase Your Tickets At The Ticketing Counters, Or Better – Save Some Time By Getting Your Awana Skyway Tickets Online!

行程仅供参考, 最终行程可能会根据实际情况进行微调。须符合条规

The itinerary is for reference only, the final itinerary may be fine-tuned according to the actual situation. Terms Apply\*



# Resorts World Awana Van Transfer Service

Travel with ease to enjoy our world-class attractions and excitements at Resorts World Genting from Resorts World Awana with our new van transfer service! The van transfer service is available to and from Resorts World Awana to any hotel within Resorts World Genting.

Pick Up & Drop-off Points Lobby ,  
Resorts World Awana



First World Hotel  
Genting SkyWorlds Hotel  
Resort Hotel  
Genting Grand Hotel  
Highlands Hotel  
Crockfords

## 24 Hour Van Transfer To Hotel Direct



### Terms & Conditions

- 1.To reserve, please call +6012 332 6386.
- 2.This service operates on a 24 hours basis.
- 3.Each ride is approximately 15 minutes.
- 4.A one-way trip per passenger is chargeable at RM15.
- 5.A minimum of one (01) hour is required to reserve this service before your desired departure time.
- 6.Each trip allows for a maximum of 10 passengers only.
- 7.Payment for this service may be made at the Reception via credit card or billing to your room.



行程仅供参考, 最终行程可能会根据实际情况进行微调。须符合条规

The itinerary is for reference only, the final itinerary may be fine-tuned according to the actual situation. Terms Apply\*



# Interior 内部 (2 + 1) 27 - 30 Seater 座位



## Coach Fleets 车队



**Gold Class**



**Recline Seat**



**USB**



**Wifi**



**Air Suspensions**

**\*\*\*Free WIFI And USB Ports Are Available On Select Coaches Only.\*\*\***

**We Are On The Verge Of Upgrading Our Coach Fleet. \*Terms Applies Please Take Note : Product Images Are For Illustrative Purposes Only.**

**\*\*\*仅部分车厢提供免费 WIFI 和 USB 端口。\*\*\***

**我们即将升级我们的客车车队。 \*适用条款请注意：产品图片仅供说明之用。**

行程仅供参考, 最终行程可能会根据实际情况进行微调。须符合条规

The itinerary is for reference only, the final itinerary may be fine-tuned according to the actual situation. Terms Apply\*



# Return From Genting 从云顶回

Board And Alight Same Location. Check In At Genting Hilltop Bus Terminal BT3 Approach 707-Inc Ground Crew In Uniforms or Holding Sign Boards For Bus Number. Present Your Voucher With Name, Date, Time, and Seat number To The Driver or Ground Crew Before Boarding.  
在同一地点上车和下车。在云顶山顶巴士总站 BT3，请向穿着707制服或手持707标牌的工作人员询问巴士号码。在登机前向司机或地勤人员出示您的订单，其中包含姓名、日期、时间和座位号



www.707-inc.com

Check In  
提早前往办理报到手续

15 Min

B

707 Genting Hilltop BT3 Bus Terminal  
Board and Alight Point  
云顶山顶 BT3 巴士总站  
上下车地点



LEGEND 图例

Parking 停车场

Hilltop Bus Terminal 山顶巴士总站

Ground Transportation Hub 地面交通中心

C 707 Genting Outlet At First World Hotel Lobby  
(Near Koong Woh Tong / Starbucks Coffee)  
707 云顶柜台在第一大酒店大堂  
靠近恭和堂 / 星巴克咖啡

707 Counter Beside Escalator 柜台电扶梯旁

The Only Bus Terminal In Genting Location / 云顶唯一的巴士总站

Hilltop Bus Terminal BT3 / Sky Avenue / Crockfords / First World Are The Same Location / 都在同一位置

707 Genting Outlet At First World Hotel Lobby (Near Koong Woh Tong)

顶柜台在第一大酒店大堂靠近恭和堂

Show & Events Redemption Counter  
柜台领取演唱会或活动门票

Operation Hour 营业时间 10.00 AM to 3.30 PM\*



707 Counter  
Beside Escalator  
柜台电扶梯旁



Near Koong Woh Tong /  
Starbucks Coffee  
靠近恭和堂 / 星巴克咖啡

行程仅供参考，最终行程可能会根据实际情况进行微调。须符合条款

The itinerary is for reference only, the final itinerary may be fine-tuned according to the actual situation. Terms Apply\*





# 707-Inc Xpress



- **Coach Insurance**
- **Coach Transfer**
- **Hotel**
- **Travel Insurance**
- **Meals**
- **Hotel Tax**

## Coach Insurance 巴士上保險 Policy Schedule

For The Benefit Of: Coach Passengers Of The Policyholder <b>Departure <u>Singapore</u> / Return <u>Singapore</u> ONLY</b> 有效:新加坡出发 / 返回新加坡	Maximum Benefit Limit Payable Per Insured Person <b>\$ SGD</b> <b>Singapore Dollars</b>
<b>1. Accidental Death &amp; Permanent Disablement</b> * 80 Years Old Above Coverage \$12,500	<b>\$ 25,000</b>
<b>2. Accidental Medical Expenses</b>	<b>\$ 2,000</b>
<b>3. Emergency Medical Evacuation</b>	<b>\$ 1,000</b>
<b>4. Loss Of Baggage Due To Thief, Burglary Or Robbery</b> (Police Report Required) 需要警方报告	<b>\$ 200</b>

Coverage: Underwritten By Chubb Insurance.

NOT Valid For Malaysia Interstate Travelers

**One Way \$5.00**

**Two Way \$10.00**

行程仅供参考, 最终行程可能会根据实际情况进行微调。须符合条规

The itinerary is for reference only, the final itinerary may be fine-tuned according to the actual situation. Terms Apply\*



# How To Book:

## RPG

### PAYMENT METHODS

R  
Reserved

P  
Payment

G  
Go

#### **A : Cash / NETS At Outlets**

**707-Inc People's Park Centre - 10:00 AM – 7:00 PM**

**Address: 101, Upper Cross Street, People's Park Centre #B1-20, Singapore 058357**

**707-Inc Boon lay Shopping Centre - 10:00 AM – 7:00 PM**

**Address : 221, Boon lay Place , #01-104, Boon lay Shopping Centre, Singapore 640221**

#### **B : PayNow**

**Book Through Whatsapp Channel**

#### **C : PayNow & Credit Card**

**Online Reservation [www.707-inc.com](http://www.707-inc.com)**

- **Destination & Package Booking Details**
- **Travel Date & Time**
- **Name As Per Passport (CAP)**
- **IC Number / Passport Number**
- **Date Of Birth**
- **Genting Member Card No. Genting Only\***

行程仅供参考, 最终行程可能会根据实际情况进行微调。须符合条规

The itinerary is for reference only, the final itinerary may be fine-tuned according to the actual situation. Terms Apply\*



# Confirmation Of Acceptance



By Booking With: 707-inc Great Excursion Travel Pte Ltd.

You Are Acknowledging That You Have Read Our Terms And Conditions

And You Agree To Be Bound By Them.

**General Terms and Conditions – Others Terms Applies Refer To [www.707-inc.com/terms](http://www.707-inc.com/terms)**

**707-Inc Great Excursion Travel Pte Ltd Is Refer Is Our Company.**

- Ticket / Tour Package Is Strictly NON-REFUNDABLE/NON-REROUTEABLE/NON TRANSFERRABLE/NO AMENDMENTS. No Show On Booked Dates Will Render Services Forfeited. Suggest Buy Travel Insurance.

## Hotel Regulations

- Hotel Standard Check In Time Is At 3:00 PM And The Standard Check-out Time Is 11:00 AM By Passport - Exclude Sustainability and Tourism Tax Per Room Per Night (Pay RM Upon Check-In).
- Room Type Is Assign By Hotels Strictly No Request. Overlap & Platinum Card Booking Will Be REJECTED. One Member Card Can Book Only Once Per Date.
- Early Check-in Is Subject To Room Availability And Surcharge. Late Checkouts Will Automatically Charge One (1) Night.
- All Room Categories (Bed Configuration) And Special Requests Are Subject To Availability Upon Check-in
- Damage And Loss Of Hotel Key Cards, Bedsheets And Towels, And Consumption Of Food And Drinks In The Mini-fridge-bar And Other Incidental Expenses Are NOT Included In The Tour/Travel Package & These Are Charged To The Client.
- Incidental Charge: Most Of The Hotels Are Requiring Security Deposit Upon Check-in. Return Of Deposit Will Be Processed Upon Check Out If No Damages Have Been Incurred During Your Stay.

行程仅供参考, 最终行程可能会根据实际情况进行微调。须符合条规

The itinerary is for reference only, the final itinerary may be fine-tuned according to the actual situation. Terms Apply\*



# Resorts World Awana

## 云顶世界阿娃娜



**Discover the embrace of pristine nature**

**Located just 35 minutes from the Kuala Lumpur city centre, the resort is an ideal destination for a refreshing break from the bustling lowlands. Popular activities include golf at our iconic 18-hole mountainous course, multi-level trekking through our 130-million-year-old rainforest and exotic bird watching.**

**Resorts World Awana is also home to AYU Awana, Malaysia's first tropical lifestyle restaurant and poolside lounge located in the highlands.**

**The resort is only a two-minute drive from the Genting Highlands Premium Outlets. Free shuttle service to the premium outlets is provided at regular intervals from the hotel lobby.**

Picture For Illustration Only 图片仅供参考

行程仅供参考, 最终行程可能会根据实际情况进行微调。须符合条规

The itinerary is for reference only, the final itinerary may be fine-tuned according to the actual situation. Terms Apply\*





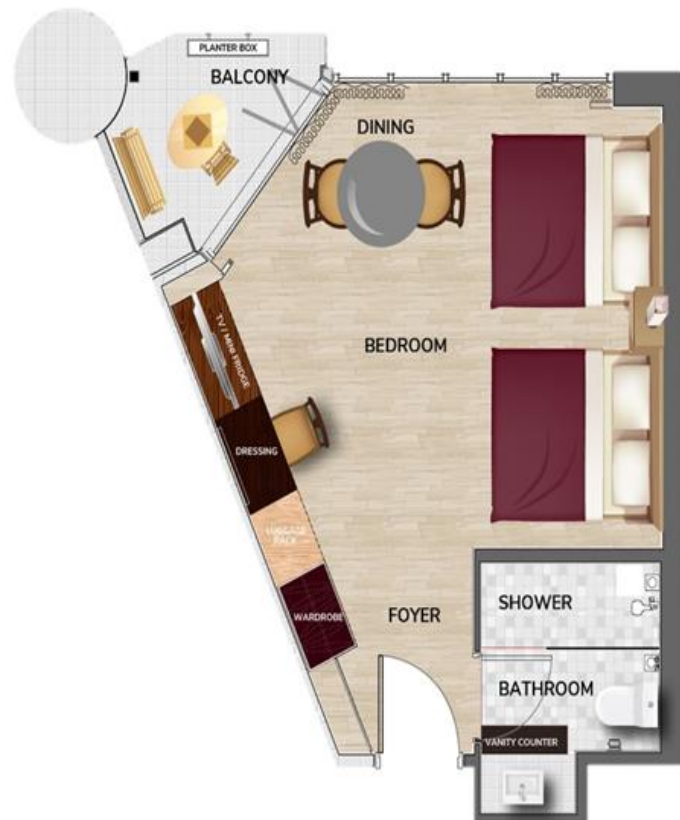
# Resort World Awana Superior Deluxe Room

With Dining Table Ideal For Two Adults Only



## Facilities & Amenities

- **Tv With Satellite Tv Programmes (Astro)**
- **In-house Movies Channel**
- **Complimentary High Speed WIFI Access**
- **In-house Telephone**
- **Hair Dryer**
- **Tea & Coffee Making Facilities**
- **Electric Water Kettle**
- **Safe Box**
- **Standing Shower**
- **Dining Table**
- **Mini Fridge**
- **Air-conditioned**



Picture For Illustration Only 图片仅供参考

行程仅供参考, 最终行程可能会根据实际情况进行微调。须符合条规

The itinerary is for reference only, the final itinerary may be fine-tuned according to the actual situation. Terms Apply\*





# Resort World Awana Club Suite Room

With Sofa Bed And Dining Table Ideal For Two Adults Only



## Facilities & Amenities

- **Tv With Satellite Tv Programmes (Astro)**
- **In House Movies Channels**
- **Complimentary High Speed WIFI Access**
- **In House Telephone**
- **Safe Box**
- **Coffee Machine**
- **Electric Water Kettle**
- **Complimentary Mineral Water**
- **Iron & Ironing Board**
- **Dining Table**
- **Mini Fridge**
- **Living Hall With Sofa Bed**
- **Air Conditioned**
- **Standing Shower**
- **Hair Dryer**
- **Bathrobe & Slippers**
- **Bath Amenities**



Picture For Illustration Only 图片仅供参考

行程仅供参考, 最终行程可能会根据实际情况进行微调。须符合条规

The itinerary is for reference only, the final itinerary may be fine-tuned according to the actual situation. Terms Apply\*





# Resort World Awana Executive Suite Room

With Sofa Bed And Dining Table Ideal For Two Adults Only



## Facilities & Amenities

- **Tv With Satellite Tv Programmes (Astro)**
- **In House Movies Channels**
- **Complimentary High Speed WIFI Access**
- **In House Telephone**
- **Safe Box**
- **Coffee Machine**
- **Electric Water Kettle**
- **Complimentary Mineral Water**
- **Iron & Ironing Board**
- **Dining Table**
- **Mini Fridge**
- **Living Hall With Sofa Bed**
- **Air Conditioned**
- **Standing Shower**
- **Hair Dryer**
- **Bathrobe & Slippers**
- **Bath Amenities**



Picture For Illustration Only 图片仅供参考

行程仅供参考, 最终行程可能会根据实际情况进行微调。须符合条规

The itinerary is for reference only, the final itinerary may be fine-tuned according to the actual situation. Terms Apply\*





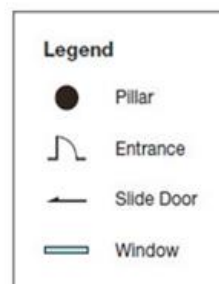
# Resort World Awana One Room Condo

With Living Space & Balcony Ideal For Two Adults Only



## Facilities & Amenities

- **TV With Satellite TV Programmes (Astro)**
- **In-house Movies Channel**
- **In-house Telephone**
- **Safe Box**
- **Tea & Coffee Making Facilities**
- **Electric Water Kettle**
- **Complimentary Mineral Water**
- **Iron & Ironing Board**
- **Dining Table**
- **Refrigerator**
- **Basic Kitchen Equipment Facilities**
- **Living Hall with Sofa**
- **Standing Shower**
- **Hair Dryer**



Picture For Illustration Only 图片仅供参考

行程仅供参考, 最终行程可能会根据实际情况进行微调。须符合条规

The itinerary is for reference only, the final itinerary may be fine-tuned according to the actual situation. Terms Apply\*





# Resort World Awana Villa

With Living Space & Balcony Ideal For Four Adults Only



## Facilities & Amenities

- 2 Queen Murphy Bed
- TV With Satellite TV Programmes (Astro)
- In-house Movies Channels
- Complimentary High Speed WIFI access
- In-house Telephone
- Safe Box
- Coffee Machine
- Tea & Coffee Making Facilities
- Electric Water Kettle
- Complimentary Mineral Water
- Iron & Ironing Board
- Dining Table
- Refrigerator
- Basic Kitchen Equipment Facilities
- Living Hall with Sofa
- Air-Conditioned
- Standing Shower
- Hair Dryer
- Bathrobe & Slippers
- Bath Amenities

Picture For Illustration Only 图片仅供参考

行程仅供参考, 最终行程可能会根据实际情况进行微调。须符合条规

The itinerary is for reference only, the final itinerary may be fine-tuned according to the actual situation. Terms Apply\*





# Genting 云顶

## Place Of Interests

**Skytropolis Indoor Theme Park**  
**SkyWorlds outdoor Theme Park**  
**Awana SkyWay**  
**Genting Entertainment Facility**  
**BigTop Video Games Park**  
**Vision City Video Games Park**  
**Sky VR**  
**Genting Snow World**  
**Ripley's Believe It Or Not**  
**Genting Bowl**

## 好玩景点

天城室内主题乐园  
 天城世界主题乐园  
 云天缆车  
 云顶娱乐设施  
 大本营电玩城  
 梦幻电玩城  
**Sky VR**  
 云顶雪世界  
 云顶信不信由你  
 云顶保龄球场

## Surrounding Explore

**Chin Swee Caves Temple**  
**Lim Goh Tong Memorial Hall**  
**Genting Strawberry Leisure Farm**  
**Gohtong Jaya**  
**World of Phalaenopsis**  
**Happy Bee Farm**  
**Awana Horse Ranch**

## 外围探索

清水岩庙  
 林梧桐纪念馆  
 云顶草莓园  
 梧桐再也  
 蝴蝶兰世界  
 蜜蜂园  
 牧马场

## Food & Night Life Explore

**Malaysian Food Street**  
**Jom Makan Street Food**  
**Genting Garden Hotpot**  
**Starbucks Coffee**  
**Han's Cha Chaan Teng**  
**Burger & Lobster**  
**Five Guys**  
**Motorino Pizzeria**  
**The Laughing Fish by Harry Ramsden**  
**High Line**  
**FUHU Restaurant**  
**Zouk Genting**  
**Cloud 9 Casual bar**  
**Redtail Karaoke**

## 美食与夜生活探索

马来西亚美食街  
**Jom Makan**美食街  
 云顶花园火锅  
 星巴克咖啡  
 汉记茶餐厅  
 天台休闲美食街  
 福虎餐厅  
**Zouk** 夜店  
**Cloud 9** 休闲酒吧  
 卡拉ok

## Shopping & Relax

**SkyAvenue Complex**  
**First World Complex**  
**Genting Grand Complex**  
**Genting Premium Outlets**  
**Awana SkyCentral**

## 购物与放松

云天综合大楼  
 第一综合大楼  
 云豪综合大楼  
 云顶名牌折扣购物中心

行程仅供参考, 最终行程可能会根据实际情况进行微调。须符合条款

The itinerary is for reference only, the final itinerary may be fine-tuned according to the actual situation. Terms Apply\*





**Theme Park Ticket Available**

**提供主题公园门票**

**~ Sold Separately 单独出售 ~**



行程仅供参考, 最终行程可能会根据实际情况进行微调。须符合条规

The itinerary is for reference only, the final itinerary may be fine-tuned according to the actual situation. Terms Apply\*